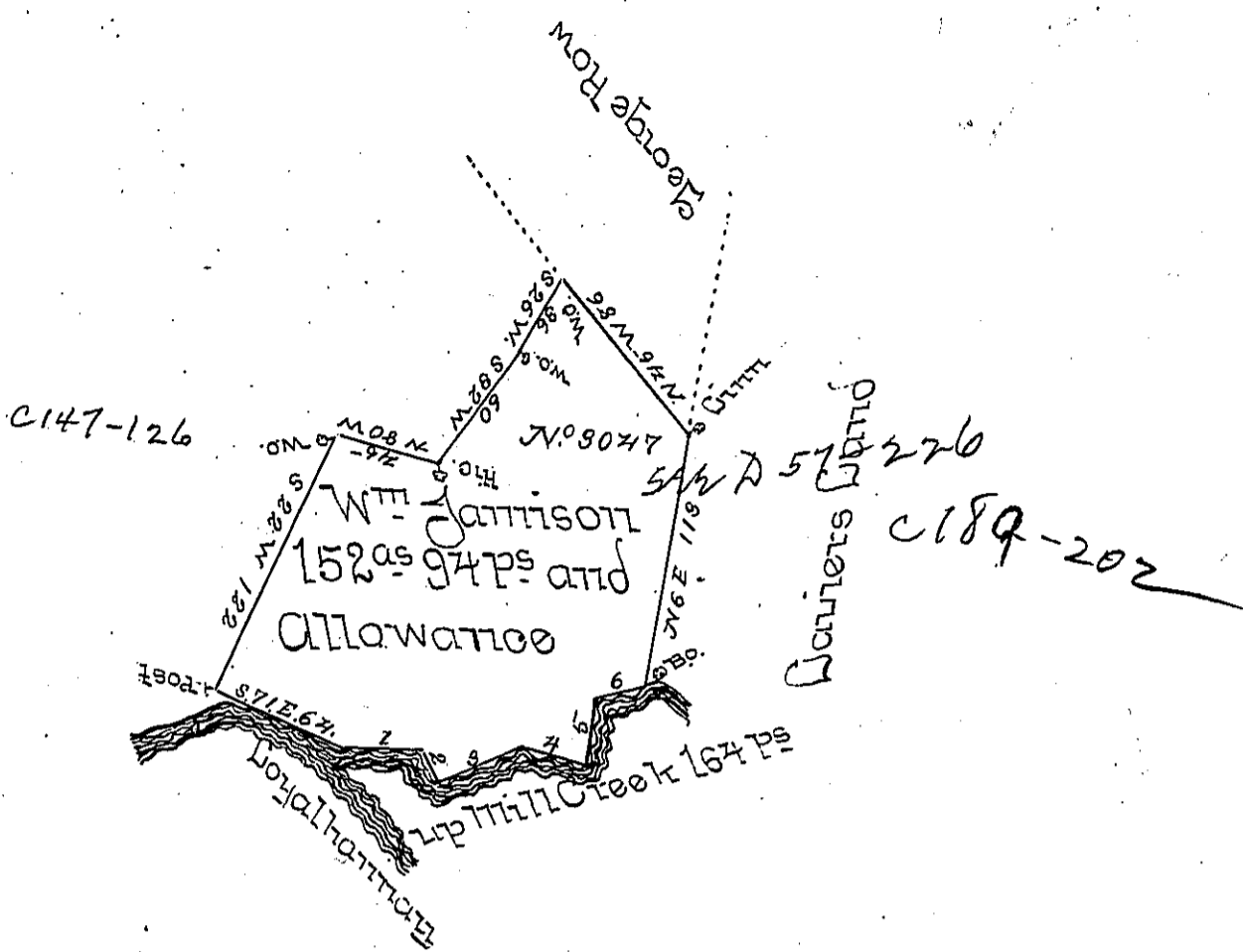


No. of Courses in Crk.	Courses of the Mill Creek	Distance
1	East	33 1/2
2	S 37 E	13
3	N 69 E	40
4	S 80 E	29
5	N 2 E	28 1/2
6	N 67 E	20
Total		164



The above Tract of Land containing One Hundred & Eighty Two Acres & 94 perches with an Allowance proportioned to 6 P Cent. Situate North West of Bigonier at the forks of the Creek including the Improvement of William Jamison, for whom it was surveyed June the 30<sup>th</sup> 1769 in Pursuance of an Order No 3047 & Dated the 13<sup>th</sup> of April 1769

To John Butens Esq  
S. Genl -

Robert M<sup>c</sup>Creed  
D.S. -

IN TESTIMONY that the above is a copy of the original remaining on file in the Department of Internal Affairs of Pennsylvania, made conformably to an Act of Assembly approved the 16th day of February, 1833, I have hereunto set my Hand and caused the Seal of said Department to be affixed at Harrisburg, this

8<sup>th</sup> day of April 1898.

*James W. Patton*  
Secretary of Internal Affairs.